



West End Youth Enquiry Service (WEYES) Refurbishment Campaign

The Vision

To turn a large, run down, three-story Victorian property in the West End of Newcastle into a dynamic and vibrant 'One Stop Shop' centre for young people (the WEYES project). It will offer confidential access to a range of free health and lifestyle information, advice and support services to enable young people to make positive choices in their lives.



Introduction

Children North East created the West End Youth Enquiry Service (WEYES) more than 10 years ago. The West End of Newcastle is recognised as an area that suffers from extreme social and economic deprivation. The service was based in a dilapidated large Victorian terraced house close to Newcastle General Hospital, which Children North East rented. This location is perfect as it is central to all areas of the West End, allowing young people from any part of the area anonymous and non-threatening access to the services. Children North East has now bought the building to safeguard the future provision of these services and plans to refurbish it.

WEYES is a successful and popular project which offers advice, information and support to young people aged 11-25 who live, study and work in the West End. It particularly focuses on young people's Health issues (General, Mental and Sexual health issues) and also provides general advice, information and support on a range of other issues facing young people such as education, literacy and numeracy, employment and training, housing, drugs and alcohol, personal safety and crime.

In its 10 years of existence the project has supported nearly 7,000 individual young people (31% Black & Ethnic Minority) through around 27,500 visits to the project.

Why this project:

- Throughout the past 10 years WEYES has developed an excellent reputation with young people, parents and members of the multi cultural community in the West End of Newcastle.
- Many young people born in the West End have grown up being involved with WEYES development or service delivery and very much identify with the project.
- WEYES has demonstrated success in engaging some of the most vulnerable young people in the area, particularly those who do not access mainstream services, and in parts of the community that other services do not reach.
- Young people who use WEYES report high levels of satisfaction with the project.

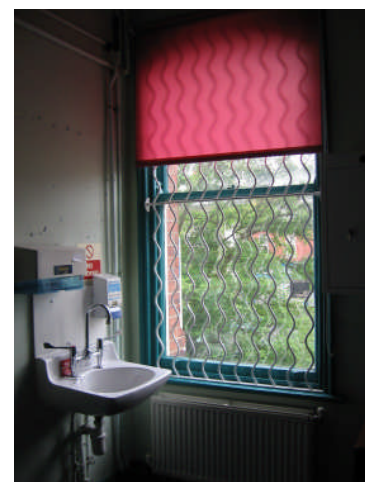
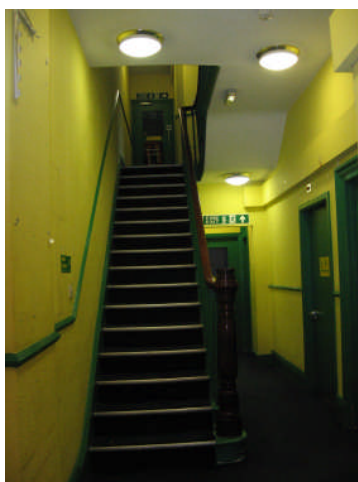
- Monitoring information and stakeholder consultation indicates that WEYES is well used by young people, both as first time and repeat visitors.
- There is overwhelming support from stakeholders for WEYES and it is widely perceived to respond to local needs well.
- WEYES has created effective links with a variety of partner agencies, enabling it to deliver a wide range of services, in a young people friendly environment that would not otherwise be delivered.
- The project operates as an important gateway to more specialist and generic services.

Why refurbish this building:

- The building is situated on one of the main thoroughfares in the West End of Newcastle.
- The 'territory-neutral' location enables young people from all sections of the multi-cultural community to access services without feeling compromised or scapegoated.
- The ease of access to the building and layout of rooms enables young people to freely use the services from a ground floor coffee bar to first floor one-to-one support and clinic rooms.
- The building is on a main bus route and is within walking distance for many West End residents.
- The building is not overlooked by other agencies or residential buildings which allows for increased anonymity.
- The street is well-lit and used by local commuters, which offers increased security for young people and visitors.
- Young people themselves identify with the building and wish to help maintain it for future generations to come.

Campaign Description

Children North East purchased 4 Graingerville North, Westgate Road, Newcastle upon Tyne on 1st August 2008. The building, a three story Victorian mid-terrace house, has been the home of WEYES for the past 10 years and was formerly owned by the Family Planning Association. During the past 10 years the building has not undergone any significant upgrading, decoration or maintenance work and as such is in need of serious refurbishment.





Fundraising Target

This campaign is to raise the funds to totally refurbish the building inside and out, making it a centre of the future for the young people of today. The total amount needed to complete the refurbishment, including a loft conversion and disabled access lift to all floors, is **£250,000**.

The work is planned in four stages with Stages 1 and 2 being the most urgent to enable us to get the centre up and running to capacity again.

- | | | |
|---------|----------------|---|
| Stage 1 | £70,000 | Urgent internal and external repairs including roof renewal. |
| Stage 2 | £73,000 | All internal modernisation including renewal of kitchen, toilets, IT Suite. All internal decoration, flooring, security, fire alarms, intercom. |

Stages 3 & 4 together will cost **just over £100,000** and would enable us to complete an attic conversion to give more clinic and office space and also install a lift which would enable the entire centre to be fully accessible at all levels.

Summary

By supporting the WEYES Refurbishment Campaign you will be helping Children North East to support some of the city's most vulnerable young people through some of the most difficult times in their lives.